

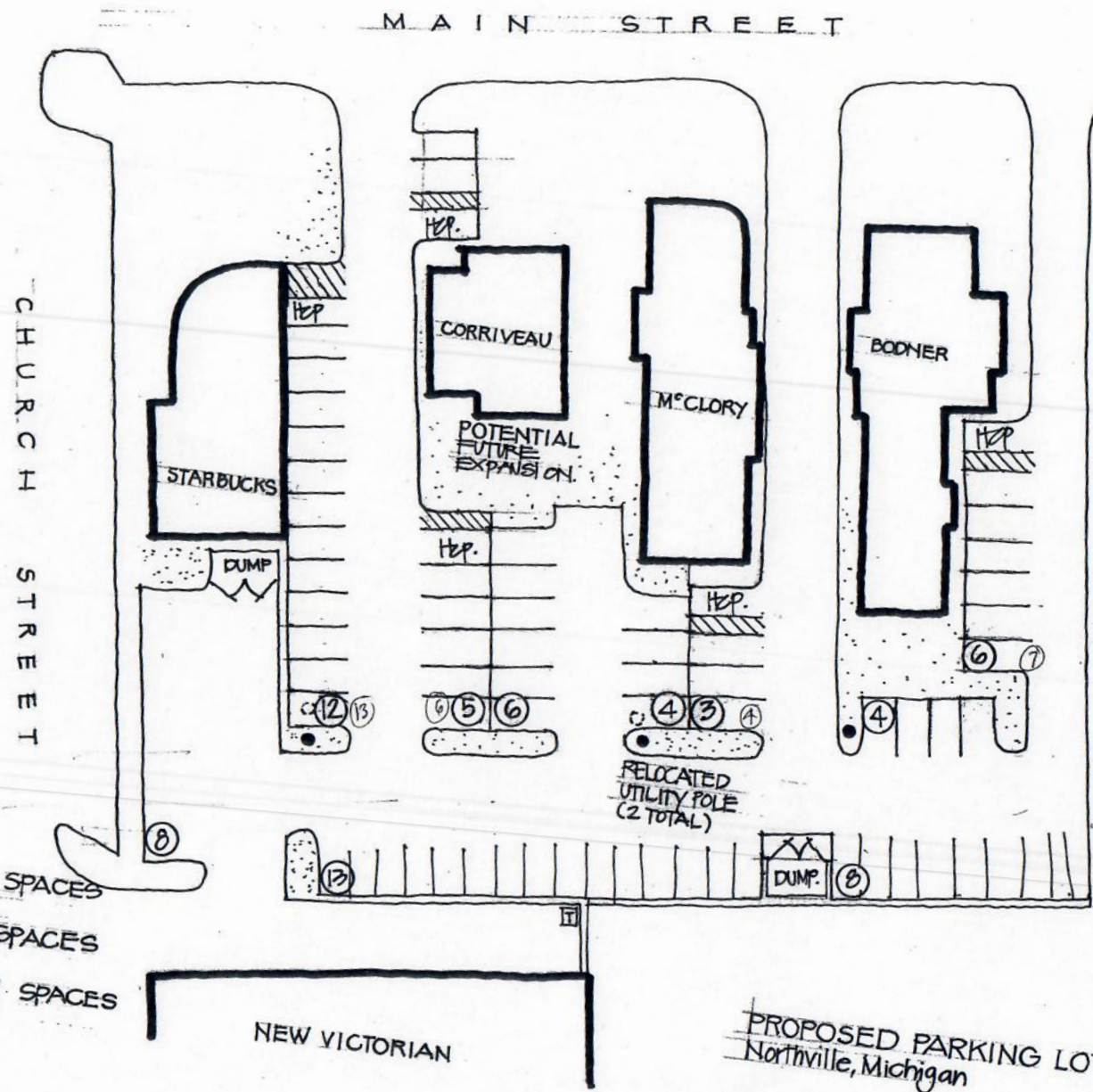


Parking Committee Meeting
Wednesday, October 5, 2022
Meeting Room A – 8:00 am

AGENDA

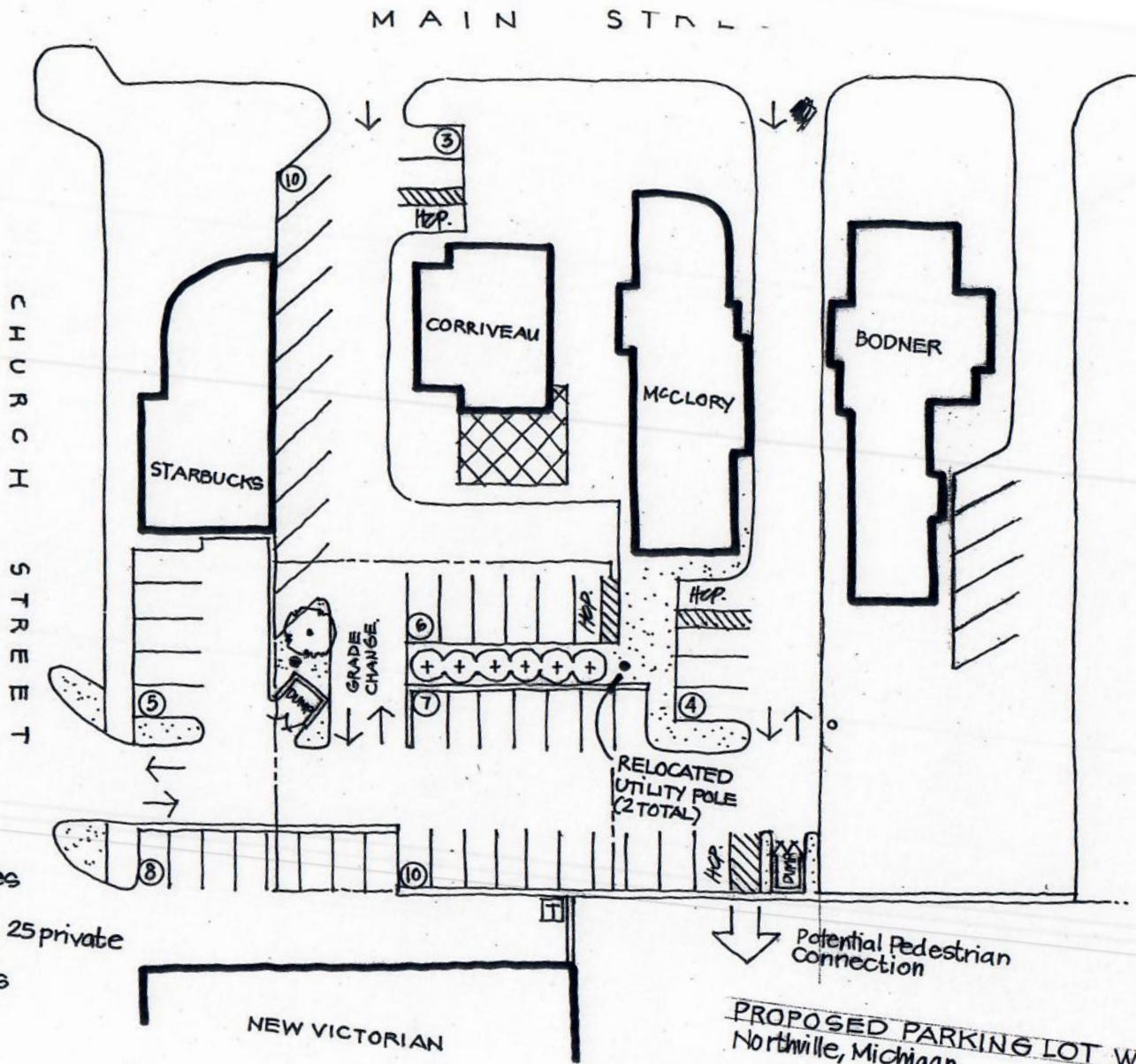
The Parking Committee will review the requested agenda items to determine if the Parking Committee is the proper place to discuss the items or if they should be referred to others to address (Planning Commission, DPW, Traffic Engineer, Street Closures Design Team).

1. Presbyterian Church and Day Care Drop-Off
 - a. Drop off issues/remedies – *technology remedy will be evaluated by Church*
 - b. Three-way stop at Cady and Hutton Streets – *Chief Maciag will review*
 - c. Hutton one-way north of Mary Alexander Court – *Traffic Engineer bucket*
2. Parking Expansion Possibilities
 - a. Consolidation of private parking from Starbucks east to Credit Union for public parking (Attachment 2.a)
 - b. Expansion of Cady Street parking deck (Attachment 2.b)
 - c. Little Italy site used for temporary or long-term parking
 - d. Site south of Post Office used for parking
3. Development and Impacts on Parking
 - a. Londeco dirt lot
 - b. Northville Downs impact on parking
 - c. Paved lot south of Cady Street
4. Street closures impact on parking - *Traffic Engineer bucket*
5. Handicapped Parking – location and amount – *DPW bucket*
6. Need for an updated parking study (Attachment 6) – *City / DDA*
7. EV charging station update (Attachment 7)
8. Adjourned



Existing Parking : 35 SPACES
Proposed Parking : 76 SPACES
Total Net Parking: +41 SPACES

PROPOSED PARKING LOT
Northville, Michigan
Scale: 1" = 30'-0"

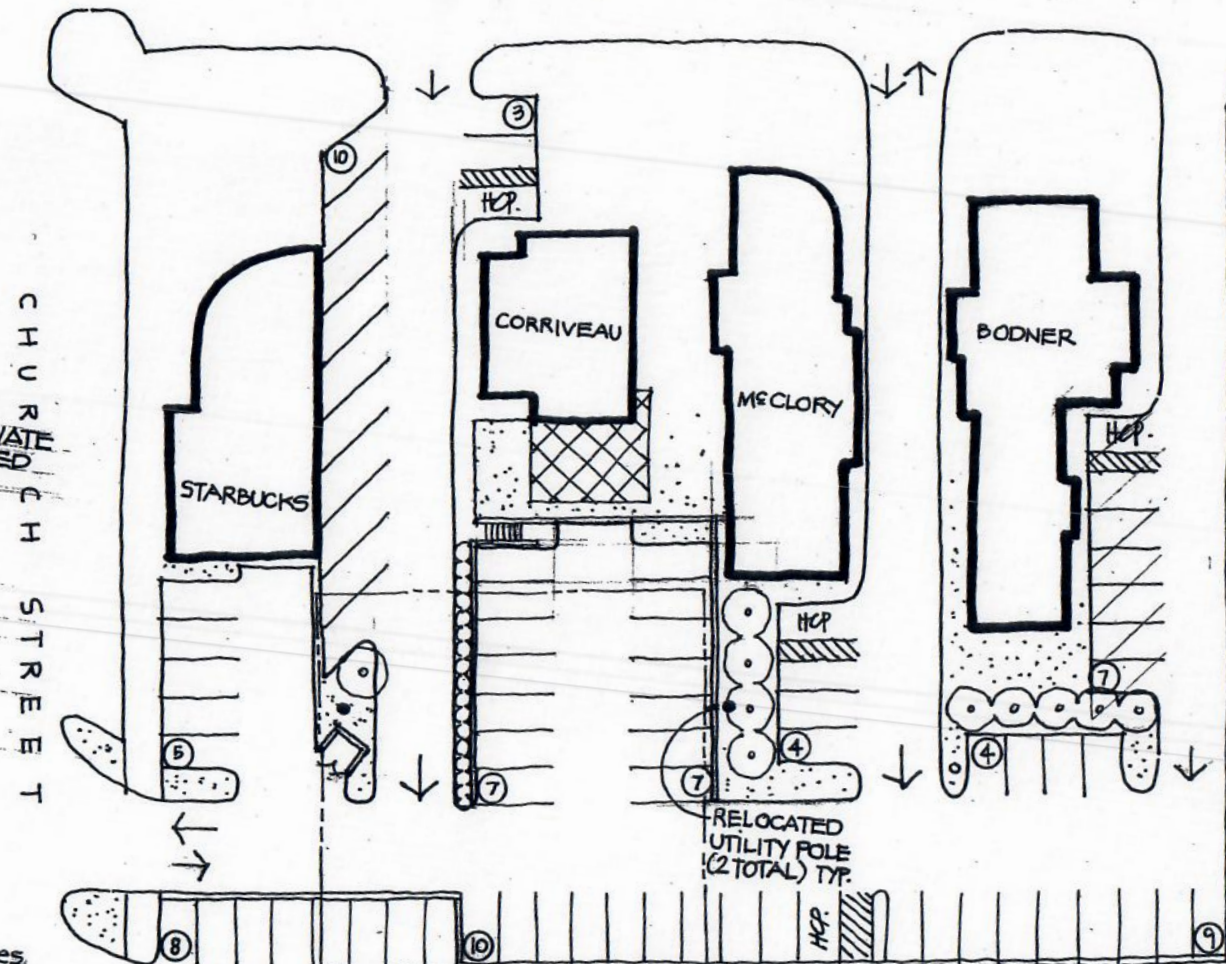


Existing Parking: 35 spaces
 Proposed Parking: 28 public 25 private
 (53 total)
 Total Net Parking: 18 spaces

Potential Pedestrian Connection
 PROPOSED PARKING LOT W/O BODNER
 Northville, Michigan

Scale: 1" = 30'-0"
 MAY 28, 2003.

MAIN STREET



CHURCH STREET

SQUARE FOOTAGE OF PRIVATE PROPERTY W/IN PROPOSED PUBLIC LOT:

- BODNER: 3,740 SF
- BUDA: 7,822 SF
- CORRIVEAU: 900 SF
- ENGERER: 2,625 SF
- McCLORY: 2,464 SF

Existing Parking: 35 spaces

Proposed Parking: 42 public 32 private (74 total)

Total Net Parking: 39 spaces

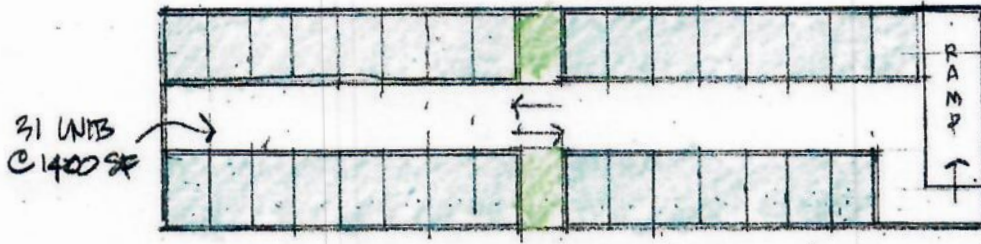
Potential Pedestrian Connection

PROPOSED PARKING LOT Northville, Michigan

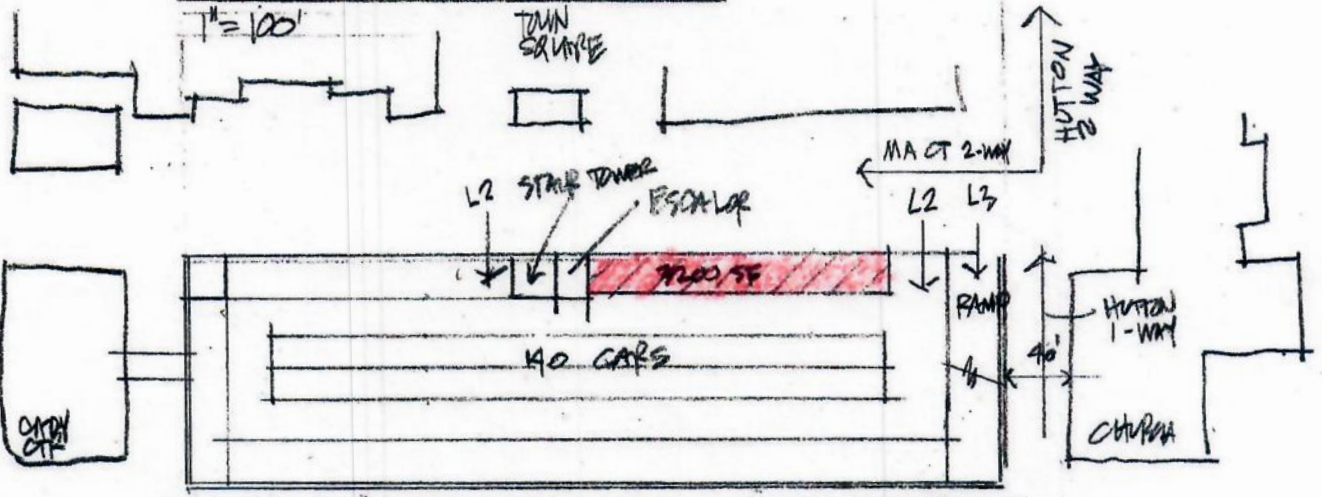
Scale: 1" = 30'-0"

JUNE 17 2003

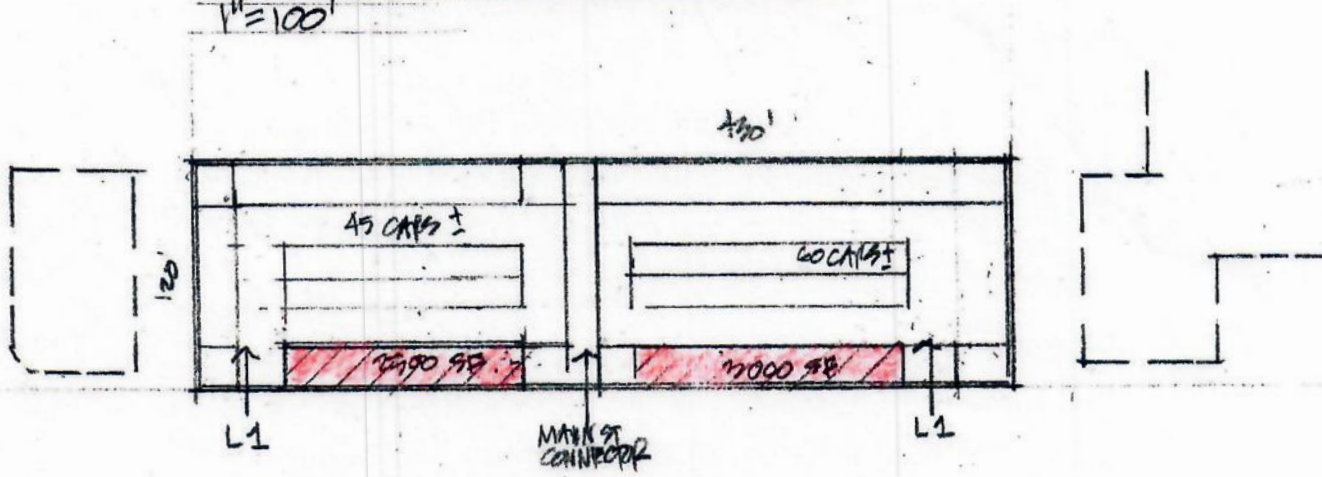
NEW VICTORIAN



LEVEL 3 @ DOWNTOWN LEVEL



LEVEL 2 AT M.A. CART LEVEL



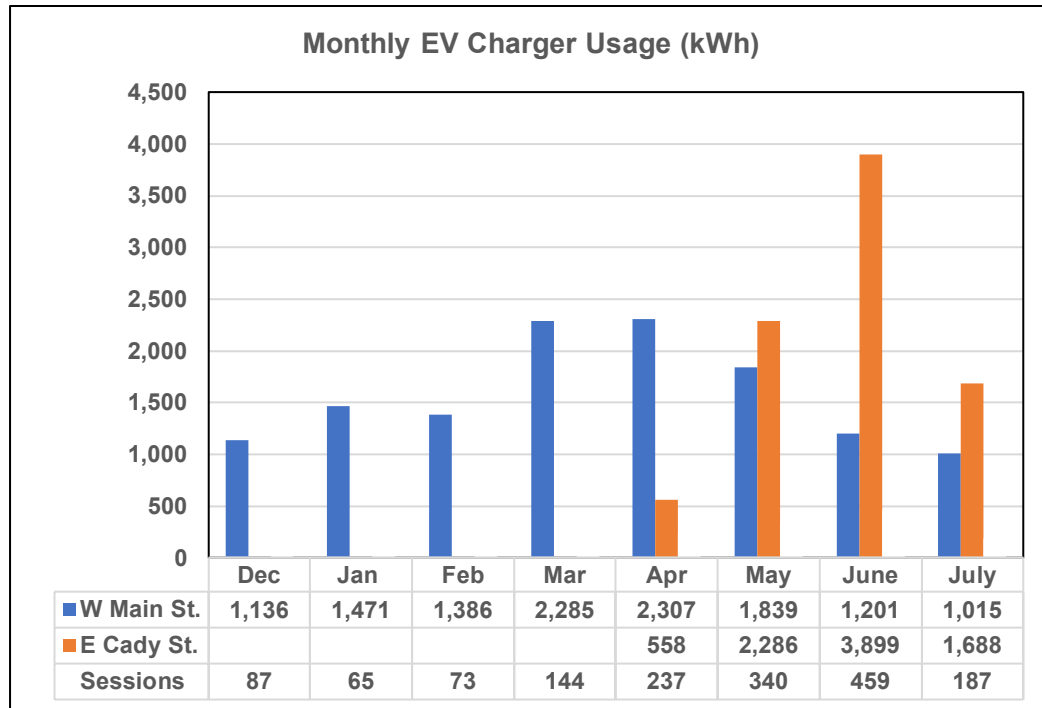
LEVEL 1 @ CRDY ST.



Northville, Michigan

W Main St. & E Cady St. Parking Deck

SITE USAGE



TRAFFIC DATA

<u>Avg. kWh per Day</u>	<u>Avg. Visits per Day</u>
90.1	6.2
<u>Gas Saved (gal)^{1 2}</u>	<u>CO2 Eliminated (lbs)³</u>
393.7	7,717.0

Assumptions:

1. 3.7 miles per kWh based on Tesla, BMW and Chevy driving data
2. 25.4 miles per gallon based on USDOT data
3. 19.6 pounds of CO2 per gallon of gas based on EPA estimates